



ZIGN
m e d i c a l



Innovative
testing and
materials
management
solutions for
hospitals

Zign Medical

Zign Medical is an innovative product development company focused on supplying high quality solutions for the medical industry. Zign Medical is committed to supporting technical and sterilization departments in hospitals with testing and materials management solutions. Their products play a crucial role in assuring and maintaining high standards for tools used in hospital theaters resulting in high quality healthcare for patients.

ZIGN
m e d i c a l

Contact

Zign Medical B.V.

Coltbaan 1
3439 NG Nieuwegein
The Netherlands

Phone: +31 85 273 67 53
sales@zignmedical.com

www.zignmedical.com



Aequitas-Medical

Distributor Belgium :

Aequitas-Medical
Kerkstraat 68 – 1601 Ruisbroek,
Belgium
TEL +32 2 378 29 32
FAX +32 2 331 56 73
info@aequitas-medical.be / www.aequitas-medical.be

www.zignmedical.com

MedZense
LG20 / LG20-e

Universal light guide
cable and endoscope
testing solution

Fast and objective measurement of light guides and endoscopes

Testing results in reduced patient risk and reduced cost

MedZense testing products

Zign Medical developed the MedZense LG20 and LG20-e to allow hospitals to objectively and efficiently assess the light transmitting quality of light guide cables and endoscopes. It is the first universal solution supporting all major brands of light guide cables and a wide variety of rigid endoscopes. It is also the first solution which tests the cable quality across the visible light spectrum.

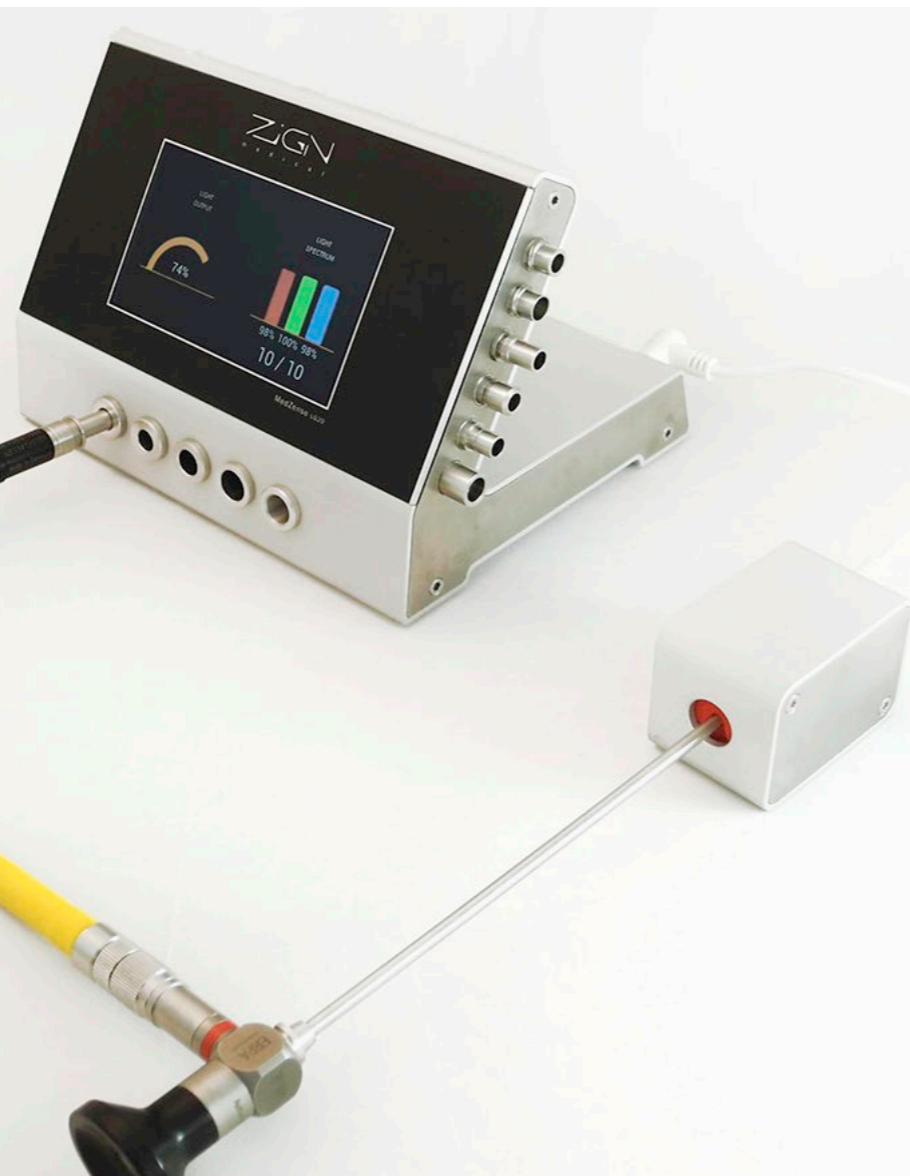
Testing your light guide cables and endoscopes helps to prevent bad functioning tools being used during minimally invasive surgery. This results in better light, better contrast and ultimately decreases patient risk, delays and cost.

LG20

The MedZense LG20 supports all major cable fittings. From now on, you only need one device to test a wide variety of cables. This provides flexibility whilst maintaining an efficient testing procedure. Operating the device is straight forward and intuitive. This allows for easy integration in the CSSD process.

LG20-e

The LG20 can be expanded with a separate testing probe for endoscopes. With the probe (PT10) connected to the main unit you can test the full light transmitting system, both cable and endoscope. This allows you to see which part of the system is not performing. Where traditionally the cable is often blamed for bad light, our experience shows that also the light transmission of endoscopes is frequently deteriorated.



Unique feature: ENDOEYE measurement



ENDOYE measurement

The optional ENDOEYE testing feature allows you to test the light transmission of your ENDOEYE video laparoscopes. The MedZense LG20-e is the only product with this feature. Our field research shows that the light transmittance of ENDOEYE video laparoscopes deteriorates significantly over time.

Why is it important to measure light performance?

During minimally invasive surgery, it is crucial to have good visibility. Both the light intensity and the composition of light are important. Bad cables and endoscopes can result in either low intensity or in bad contrast due to the composition of light.

Spectrum measurement

Besides testing on white light, the MedZense LG20 measures the light transmission across the visible light spectrum. This unique feature allows you to prevent loss of contrast, especially on red subjects, during procedures. Furthermore, the spectrum analysis shows an early indication of pollution and burn damage of fibers.

Connectivity

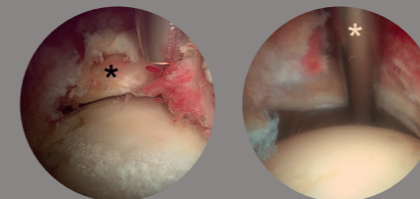
The MedZense LG20 can be connected to a computer by USB. This creates the possibility to test and track results on instrument level. Zign Medical provides software to collect and analyze this data which allows hospitals to structurally manage and control quality. The software can be integrated with your existing systems.

The MedZense unique features:

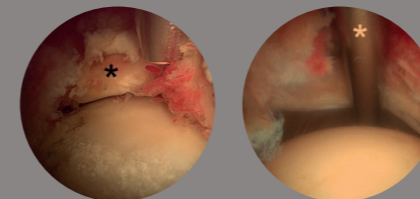
- All major types of fittings are supported
- Test white light and across the full visible light spectrum
- Test rigid endoscopes from 2.7 to 10 mm
- Test ENDOEYE video laparoscopes
- Adjustable acceptance and rejection levels
- Collect and analyze test data

Glass fiber color loss

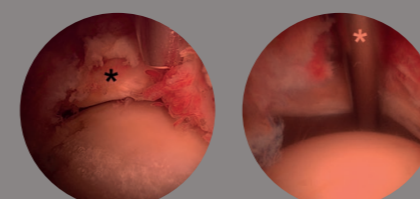
Effect of color loss (digital simulation)



New cable R: 100% G:90% B: 80%



Old cable R: 100% G: 70% B: 50%



Burnt cable R: 100% G: 50% B: 40%